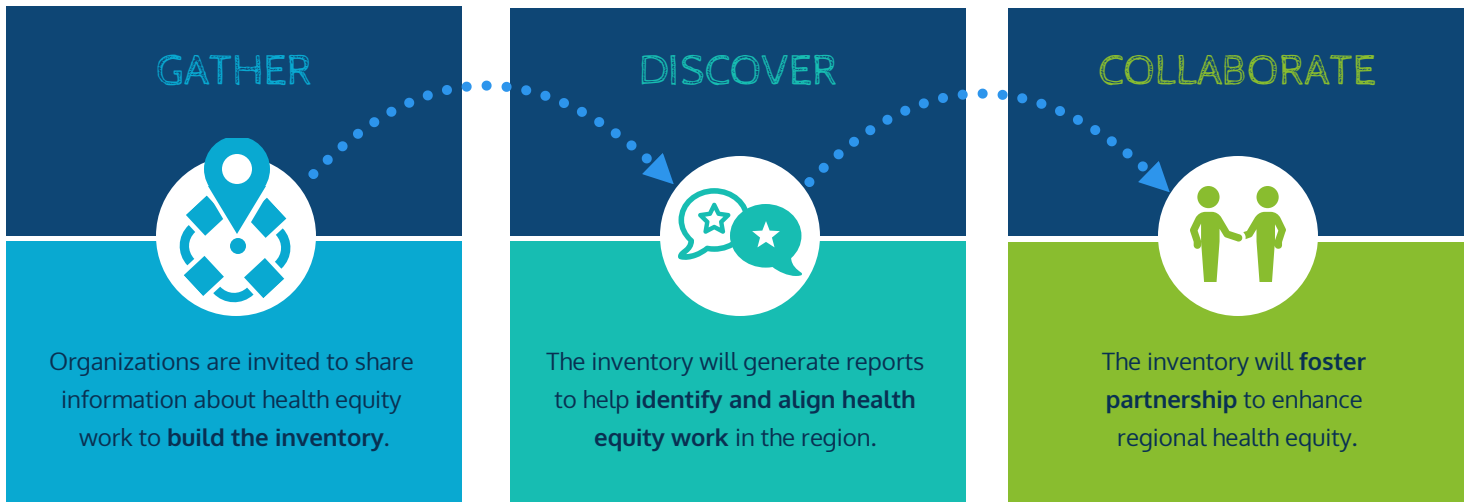


EVMS/AAMC Health Equity Inventory Enhancement Project

The Health Equity Inventory (HEI) is an online tool to collect information about health equity work in Eastern Virginia communities.



FREQUENTLY ASKED QUESTIONS



How will the HEI tool help your organization?

The HEI tool will provide reports to help your organization: 1) learn about other health equity work in our community, 2) share information about your organization's health equity initiatives, and 3) identify opportunities for collaboration.

What do we mean by health equity work?

The HEI tool is being established to collect data on health equity work including programs, initiatives, curricula, and other activities focusing on: 1) improving community health and/or 2) narrowing unjust, systematic differences in health.

Where did the HEI come from?

The first HEI tool was developed by the AAMC Center for Health Justice through a project to build a systems approach to health equity for academic health centers. In early 2022, the AAMC launched a two-year pilot with Vanderbilt University, EVMS, and three other institutions to update the HEI to a cloud-based version with downloadable reports.

FOR MORE INFORMATION

Visit the [Brock Institute website](#).

Kassandra Prasanna, Program Administrator, prasankm@evms.edu, 757-446-7174

Dr. Cynthia Romero, Director, romerocc@evms.edu, 757-274-8322

EVMS

M. FOSCUE BROCK
INSTITUTE FOR COMMUNITY
AND GLOBAL HEALTH